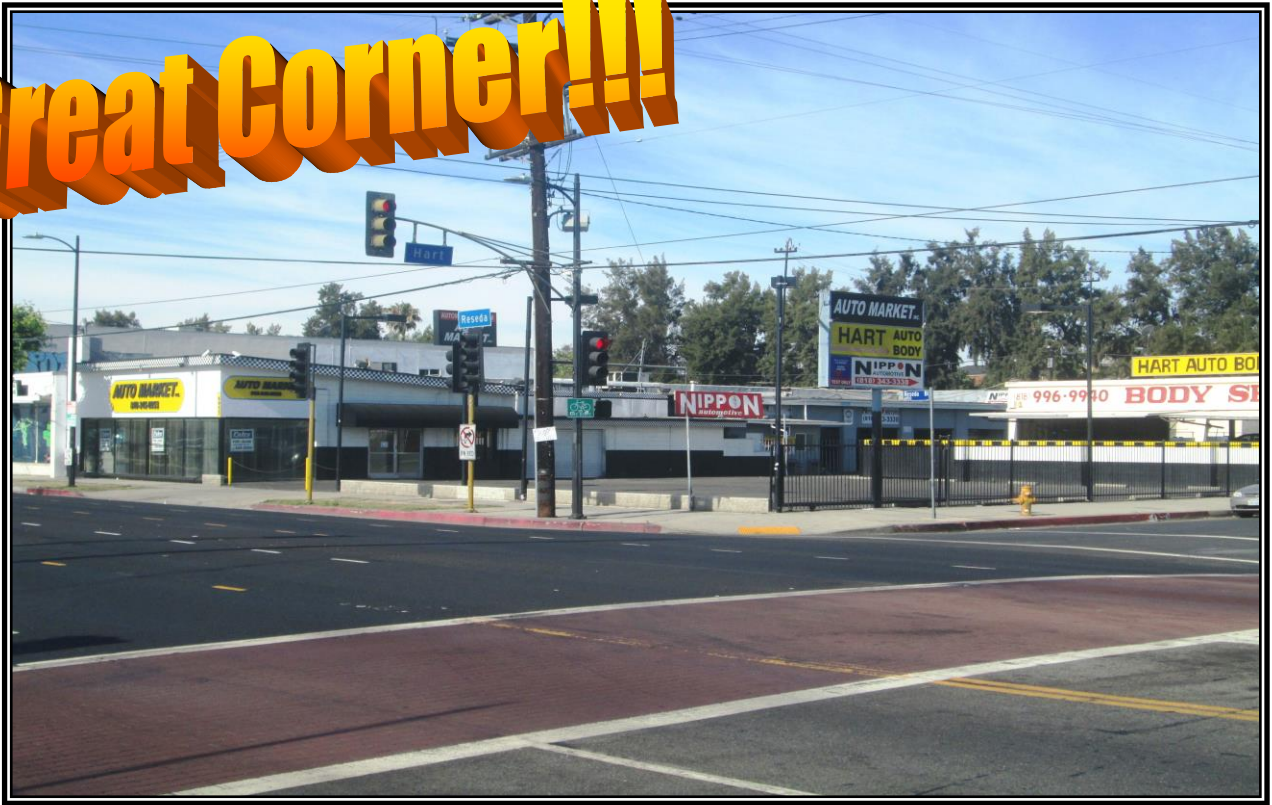


Great Corner!!!



LOCATION:	6955 Reseda Boulevard, Reseda, Ca 91335
SIZE:	3,000 +/- square feet of building* 10,000 +/- square feet of land*
RENTAL RATE:	\$7,950.00 per month, MG
AVAILABLE:	Immediate
PARKING:	Parking lot can accommodate 40 – 50* cars as well as ample street parking available
COMMENTS:	* Located at the signalized corner of Reseda Boulevard & Hart Street * Excellent building and pole signage * Many area amenities nearby * Features a showroom, detail area and offices * Recently remodeled and ready to go!!!

FOR MORE INFORMATION OR A TOUR, PLEASE CONTACT:

Richard L. Paley
richard@paleycommercial.com
DRE: 00966353

Benjamin L. Paley
ben@paleycommercial.com
DRE: 02074047

*Lessee to Verify